

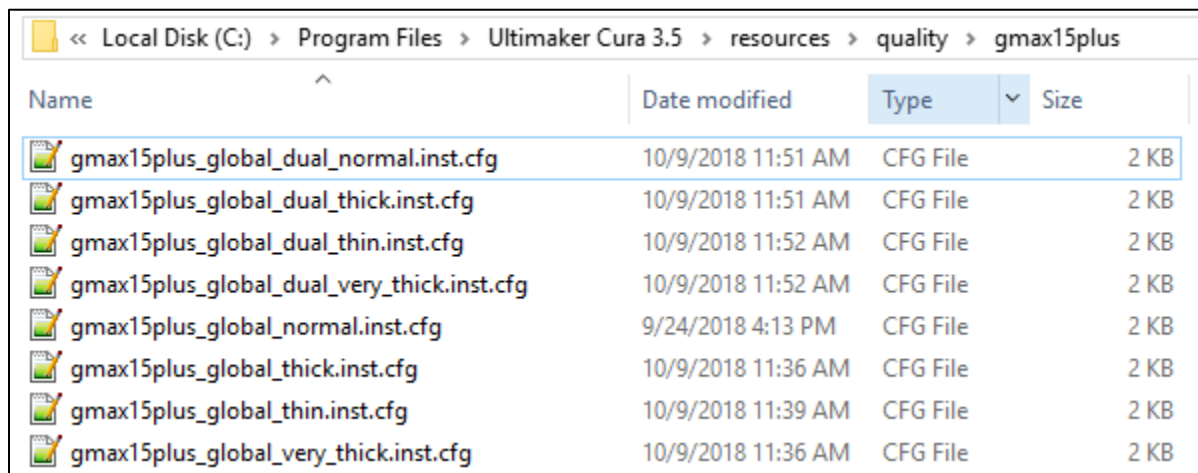
# gCreate

## gMax 1.5+ Cura 3.5.1 Config File Install

10.23.18

To install gMax 1.5+ Config files for Cura 3.5.1 we must update and remove some old config files.

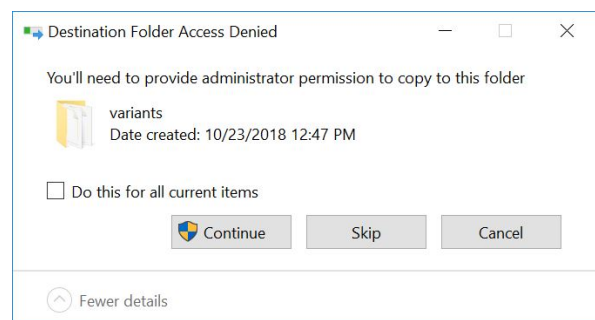
1. Unzip our config file bundle somewhere on your computer.
2. Uninstall Cura 3.5 and old config files if you already installed it.
3. Do a fresh install of Cura 3.5.1. and uncheck the box that says "Run Cura after install" if it pops up.
4. After Cura is done installing, open the folder: **C:\Program Files\UltimakerCura 3.5\resources\quality\gmax15plus\**
5. Delete all the files in the folder
6. Copy over the new files from **quality\gmax15plus\** into the folder. When complete, these should be the only files in the folder.



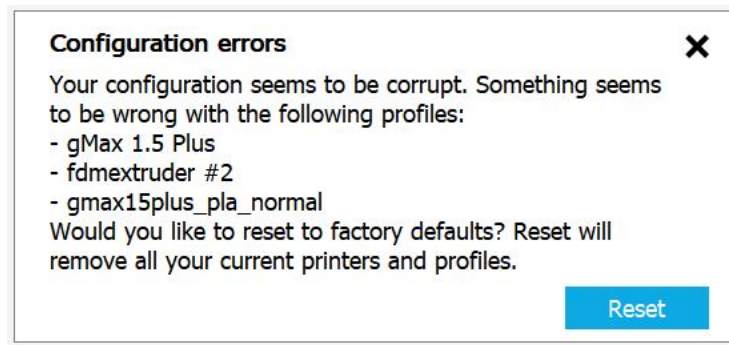
7. Open: **C:\Program Files\Ultimaker Cura 3.5\resources**

8. Copy over the following folders, from our config bundle, and overwrite old files if asked. Click "Continue" to allow administrator permission if it pops up.

**definitions**  
**extruders**  
**meshes**  
**variants**



9. Open **C:\Program Files\Ultimaker Cura 3.5\resources\variants\** and delete the following two files:  
**gmax15plus\_025\_e3d.inst.cfg**  
**gmax15plus\_dual\_025\_e3d.inst.cfg**
10. Run Cura. If you receive an error like the image below, click “Reset” configuration and restart Cura. Note, you may have to pick a printer from the list before you can click “Reset”. Don’t worry this will be deleted when you reset.



11. Select **gMax 1.5+** from the bottom of the “Other” section. If everything went well you should not have any crashes and the new Cura should display the printer properly.

