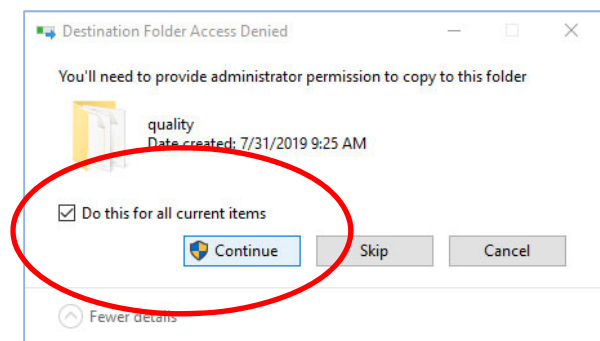


Tested on new clean installation of Cura 4.1 and Cura 4.2

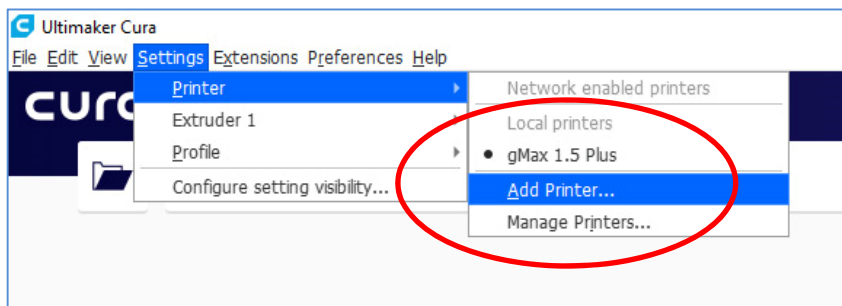
1. Unzip our config file bundle somewhere on your computer.
2. Install Cura 4.2
3. After installation, close Cura if it is open.
4. Open: **C:\Program Files\Ultimaker Cura 4.x\resources**
5. Copy over the following folders, from our config bundle. If access is required:

definitions
extruders
meshes
quality
variants

Select **“Do this for all current items”**.
Click **“Continue”** to allow administrator permission if it pops up.

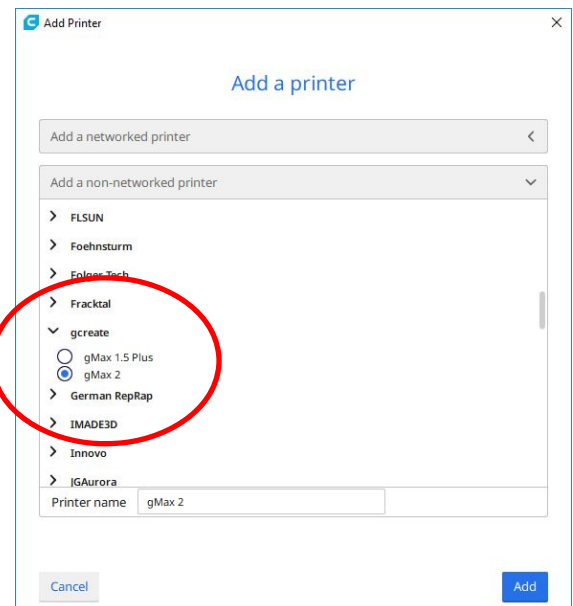
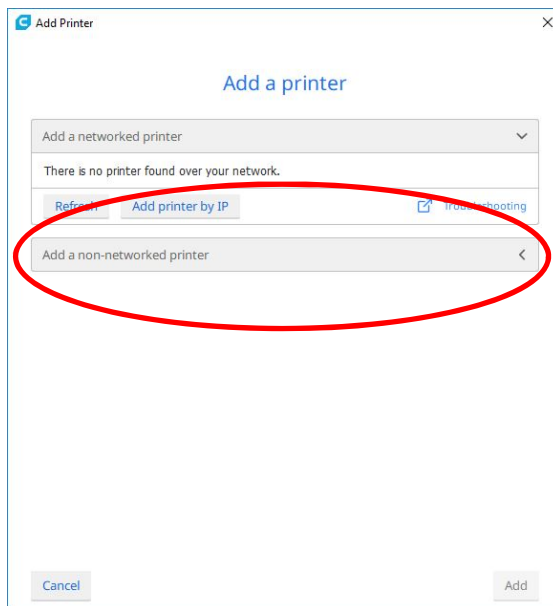


6. Open Cura 4.x
7. In top menu select **“Settings > Printer > Add Printer...”**



8. Select the “**Other**” Category

9. “**Add a non-networked printer**” then select “**gCreate > gMax 2**”



10. Click Add.

11. You should now see the gMax 2 profile in Cura.

