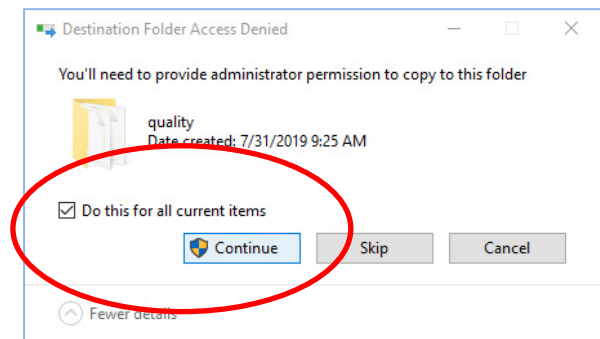


Tested on clean installation of Cura 4.2

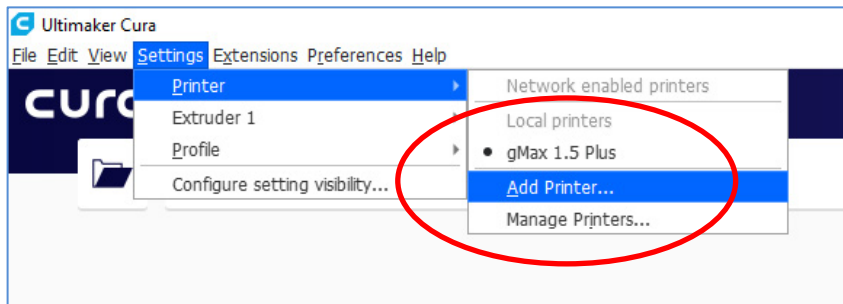
1. Unzip the config file bundle somewhere on your computer.
2. Install Cura 4.2
3. After installation, close Cura if it is open.
4. Open: **C:\Program Files\Ultimaker Cura 4.2\resources**
5. Copy over the following folders, from our config bundle. If access is required:

definitions
extruders
meshes
quality
variants

Select **“Do this for all current items”**.
Click **“Continue”** to allow administrator permission if it pops up.

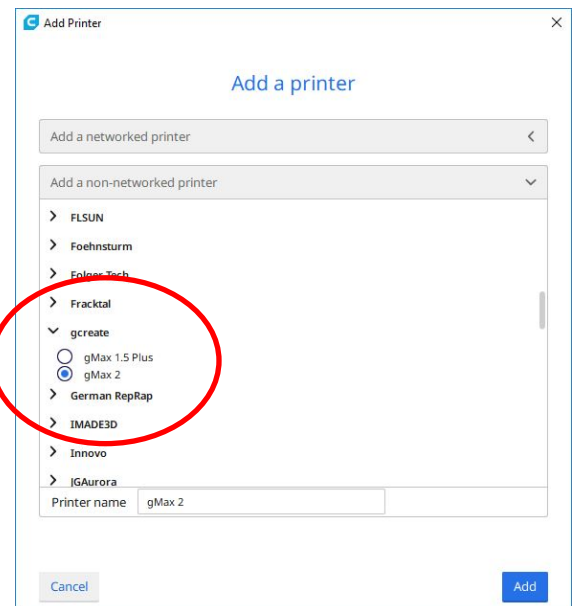
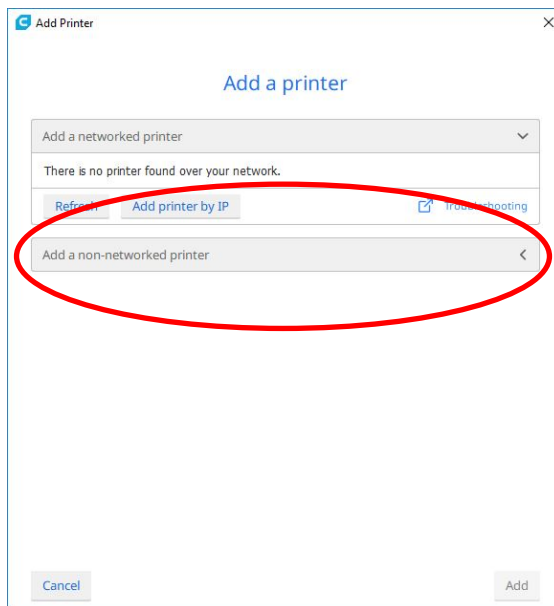


6. Open Cura 4.2
7. In top menu select **“Settings > Printer > Add Printer...”**



8. Select the **“Other”** Category

9. **“Add a non-networked printer”** then select the desired gMax printer Profile.



10. Click Add.

11. You should now see the gMax 2 profile in Cura.

