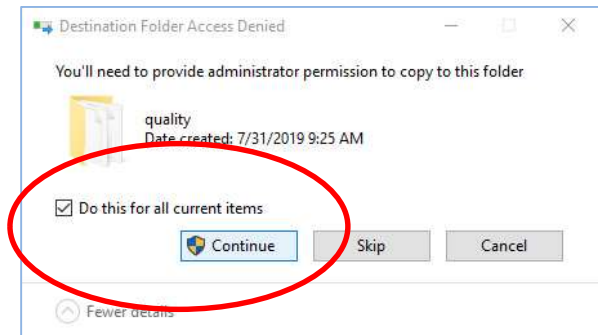


Tested on clean installation of Cura 4.6.x. Note: Cura has changed the way configuration files are handled in 4.6.x. Use these as base files and adjust the settings to fit your requirements. The heated bed is also off by default and can be turned on at the end of the manual.

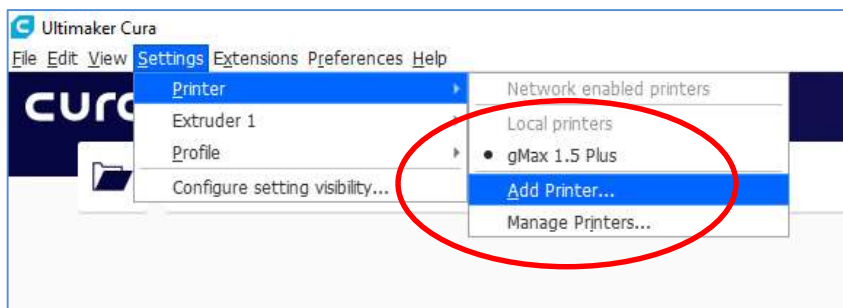
1. Unzip the config file bundle somewhere on your computer.
2. Install Cura 4.6.x
3. After installation, close Cura if it is open.
4. Open: **C:\Program Files\Ultimaker Cura 4.6\resources**
5. Copy over the following folders, from our config bundle. If access is required:

definitions
extruders
meshes
quality
variants

Select **“Do this for all current items”**.
Click **“Continue”** to allow administrator permission if it pops up.

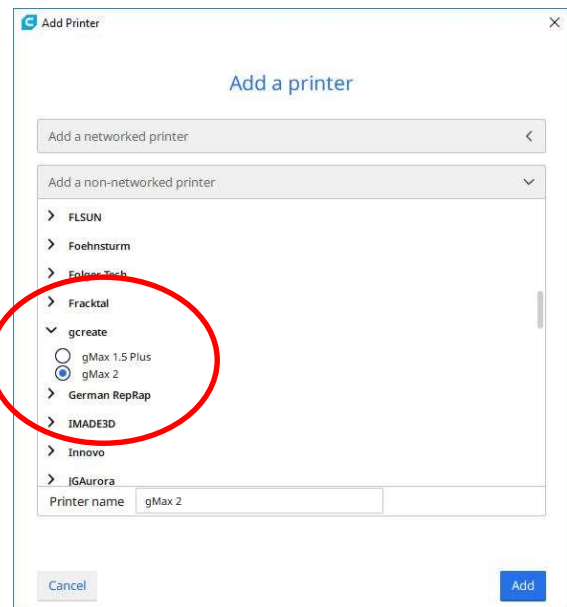
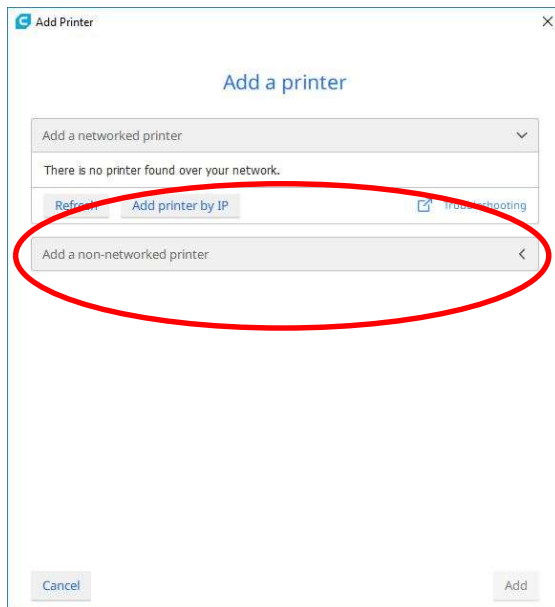


6. Open Cura 4.6
7. In the top menu select **“Settings > Printer > Add Printer...”**



8. Select the “**Other**” Category

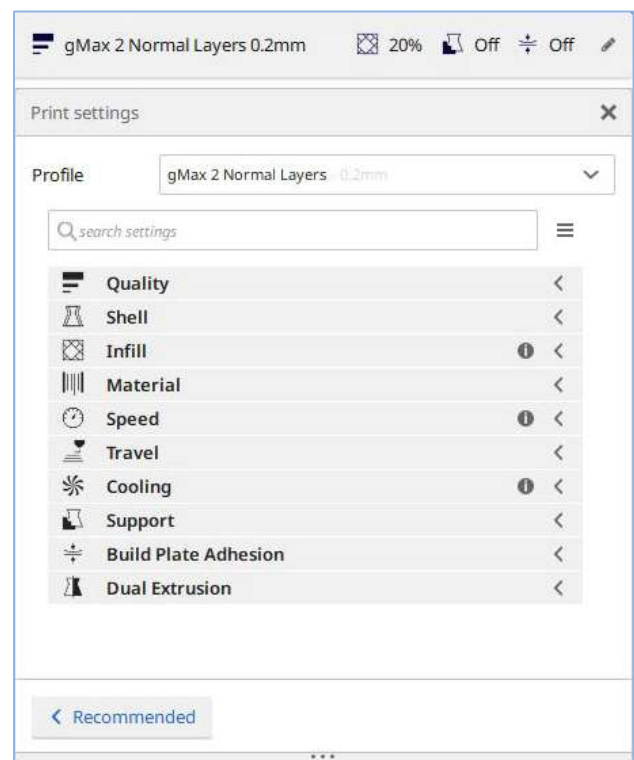
9. “**Add a non-networked printer**” then select the desired gMax printer Profile.



10. Click Add.

11. You should now see the gMax 2 profile in Cura.

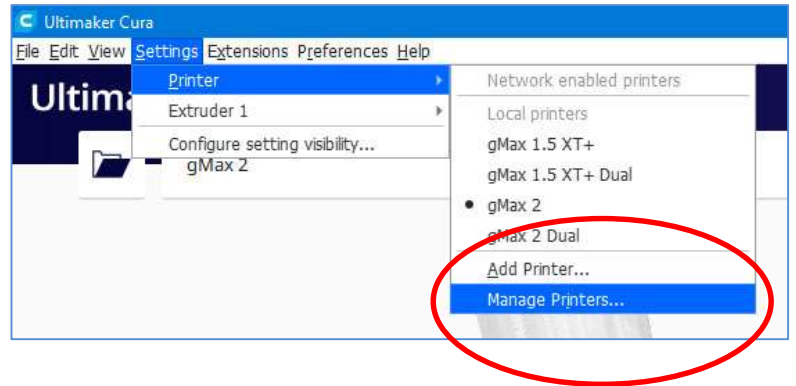
12. The profiles are linked to nozzle sizes and materials. Note some materials may not be supported for the selected nozzle and will show up as red/orange.



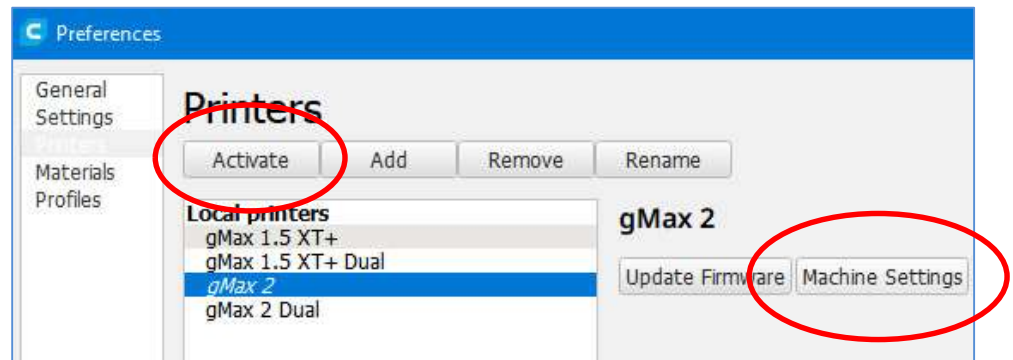
gMax 2 Turn on Heated Bed

By default the heated bed is turned off in our Cura 4.6.x configuration files. Follow the instructions below to turn it on

1. In the top menu select **“Settings > Printer > Manage Printers...”**



2. **Activate** your desired printer and select **“Machine Settings”**



3. Click the check box next to **“Heated Bed”**.
4. Now you can adjust the heated bed temperature in the standard settings panels.

