

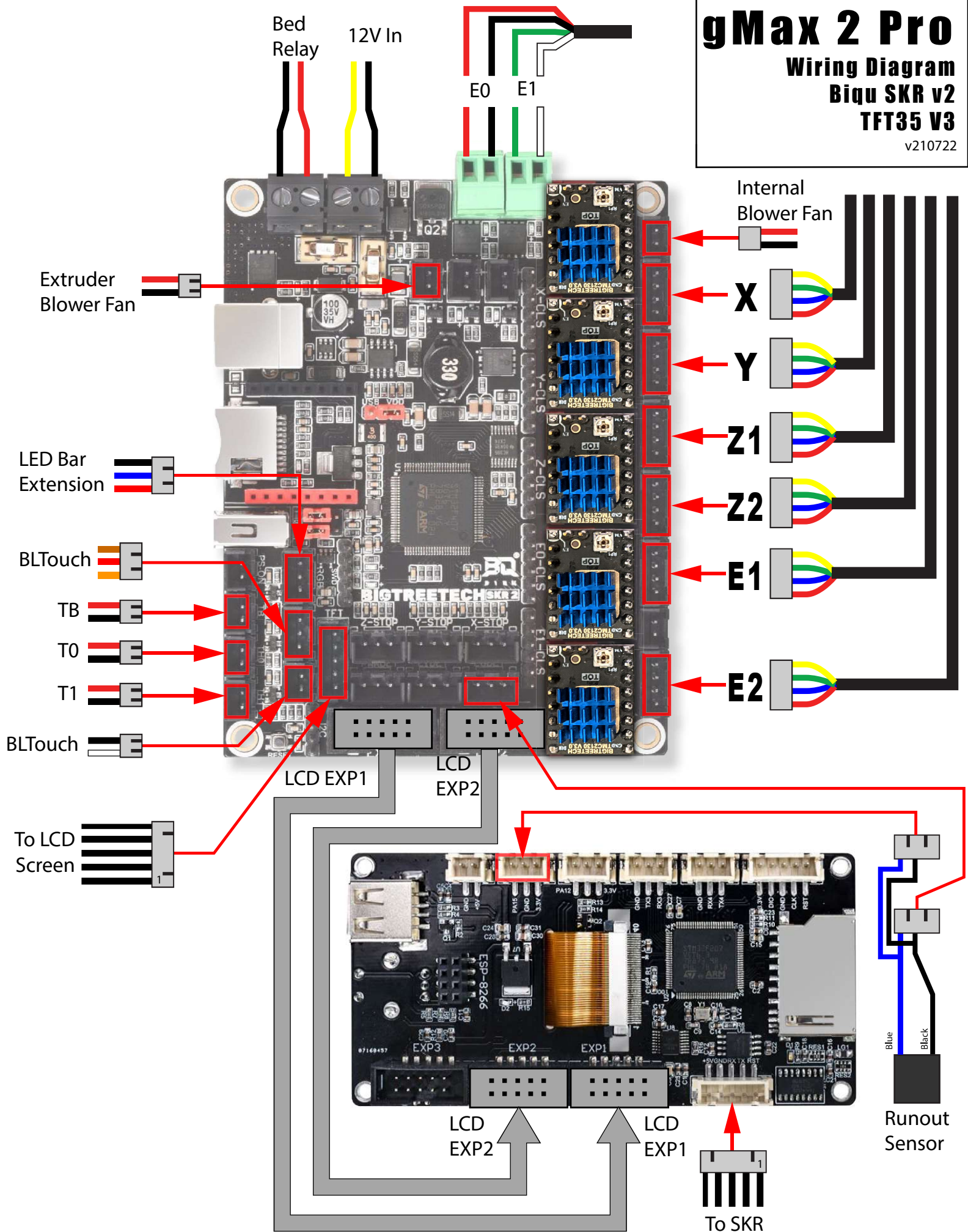
# gMax 2 Pro

## Wiring Diagram

### Biqu SKR v2

### TFT35 V3

v210722





# gMax 2 Pro

Wiring Diagram

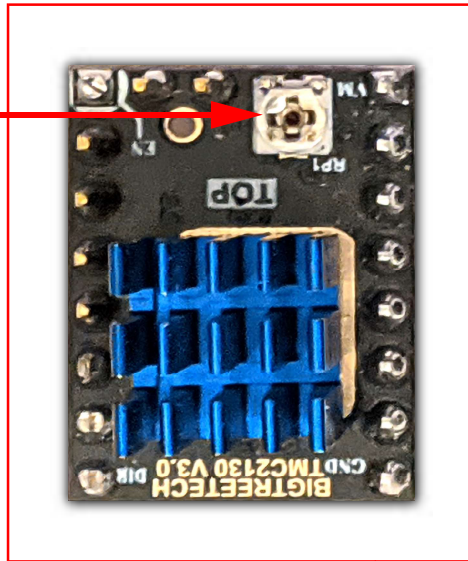
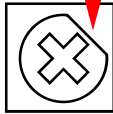
Biqu SKR v2

TFT35 V3

v210722

Adjustable Potentiometer  
(Current to Motors)  
Clockwise to increase  
Counterclockwise to decrease

Note:  
Flat spot on  
potentiometer should  
be at about 45 degrees  
when viewed from the  
top

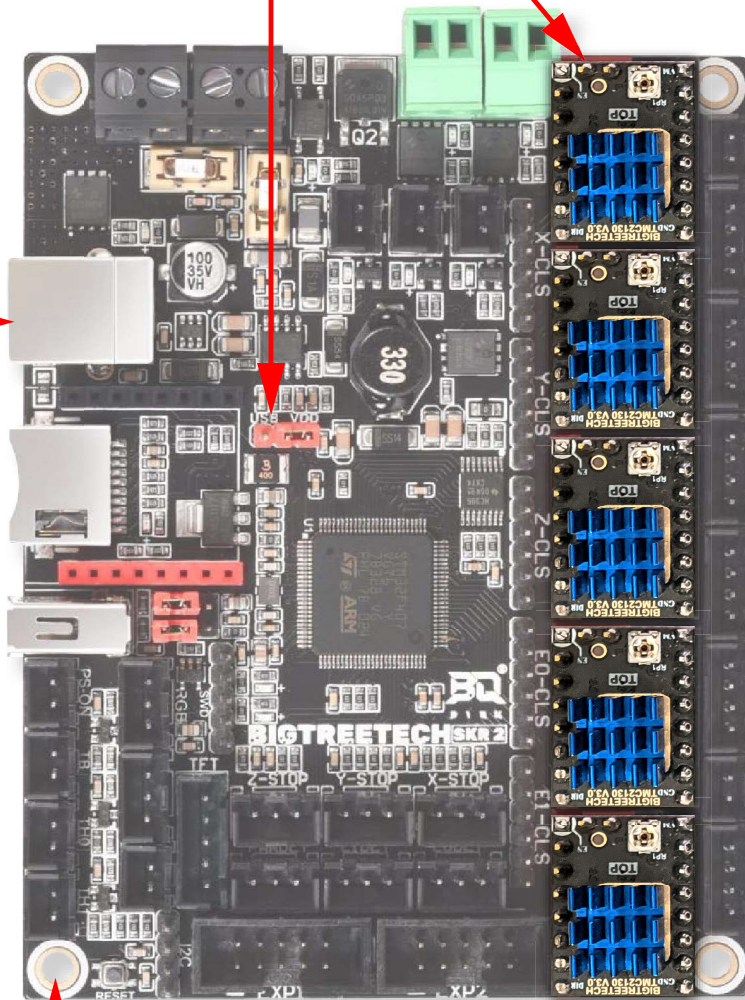


USB 5v Power Mode  
(For testing)

USB Port

Micro SD  
(Firmware)

Reset Button



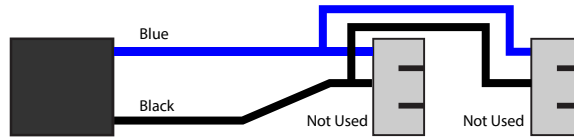
# gMax 2 BIQU SKR v2 Turbo Wires

v210722

RUNOUT  
(Internal)

Qty 1

3-pin 2.54mm  
Dupont Connector

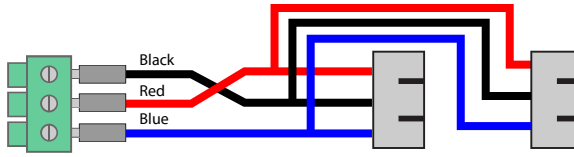


9" + 3" 3-pin 2.54mm  
JST Connector

RUNOUT

Qty 1

3 Position 15EDG  
Connector

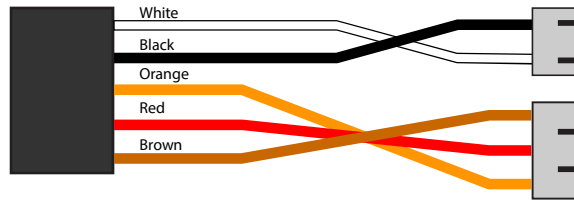


37" + 13" 3-pin 2.54mm  
JST Connector

BLTOUCH

Qty 1

5-pin 2.54mm  
Dupont Connector



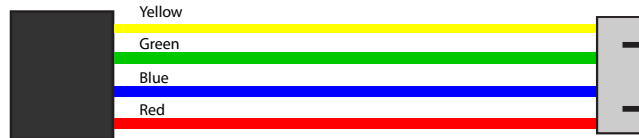
8" 2-pin 2.54mm  
JST Connector

8" 3-pin 2.54mm  
JST Connector

EXTRUDER

Qty 2

4-pin 2.54mm  
Dupont Connector



10" 4-pin 2.54mm  
JST Connector

MOTOR  
EXTENSION

Qty 4

4-pin 2.54mm  
Dupont  
Connector Male Pins



4" 4-pin 2.54mm  
JST Connector

BLOWER FAN

Qty 1

2-pin 2.54mm  
Dupont Connector



4" 2-pin 2.54mm  
JST Connector

BED RELAY

Qty 1

2-pin 2.54mm  
Dupont Connector



4" 24 AWG FERRULES

THERMISTORS

Qty 3

2-pin 2.54mm  
Dupont Connector



8" 2-pin 2.54mm  
JST Connector

TFT SCREEN

Qty 1

5-pin 2.54mm  
JST Connector



5" 5-pin 2.54mm  
JST Connector

RIBBON CABLE

Qty 2

10-pin ribbon  
cable Connector

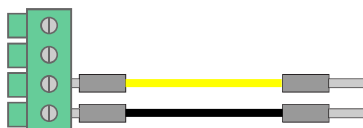


4" 10-pin ribbon  
cable Connector

SKR POWER

Qty 1

4 Position 15EDG  
Connector



4" 22 AWG FERRULES

RGB LED EXT.

Qty 1

3-pin 2.54mm  
JST Connector

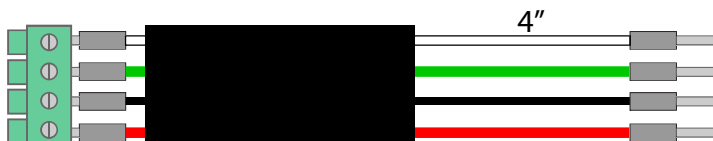


8" 3-pin 2.54mm  
JST Socket

Extruder Power

Qty 1

4 Position Terminal  
Connector



72" 18 AWG  
FERRULES